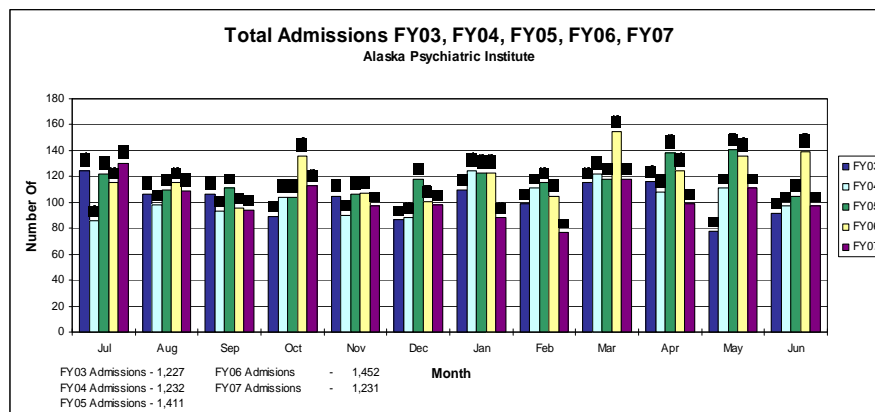


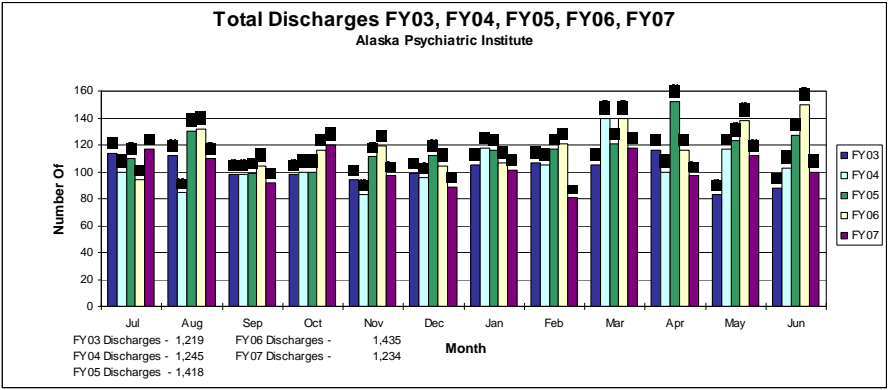
# Alaska Psychiatric Institute

## Admissions & Demographic Annual Report

(As of 08/20/2007)

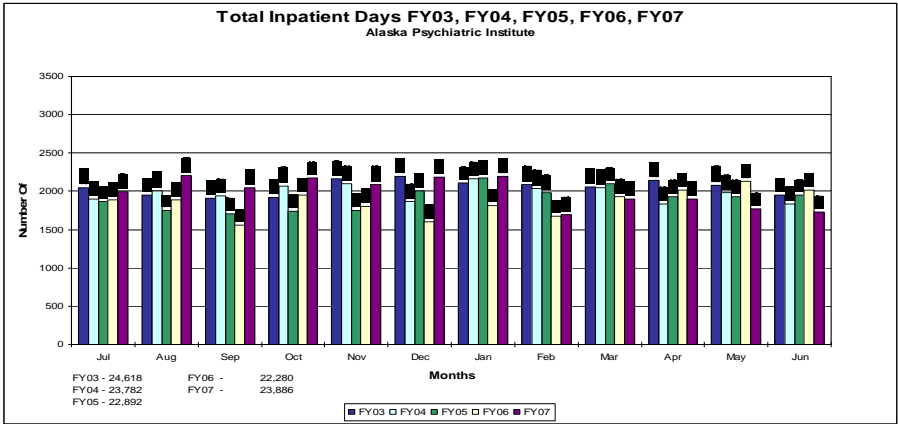


	FY03	FY04	FY05	FY06	FY07
Jul	124	86	122	115	130
Aug	106	98	110	115	109
Sep	106	93	111	96	94
Oct	89	104	104	136	113
Nov	105	90	106	107	97
Dec	87	88	118	101	98
Jan	110	124	123	123	88
Feb	99	111	115	105	77
Mar	115	122	118	155	118
Apr	116	108	138	124	99
May	73	111	141	136	111
Jun	92	97	105	139	97
<b>Total</b>	<b>1227</b>	<b>1232</b>	<b>1411</b>	<b>1452</b>	<b>1231</b>



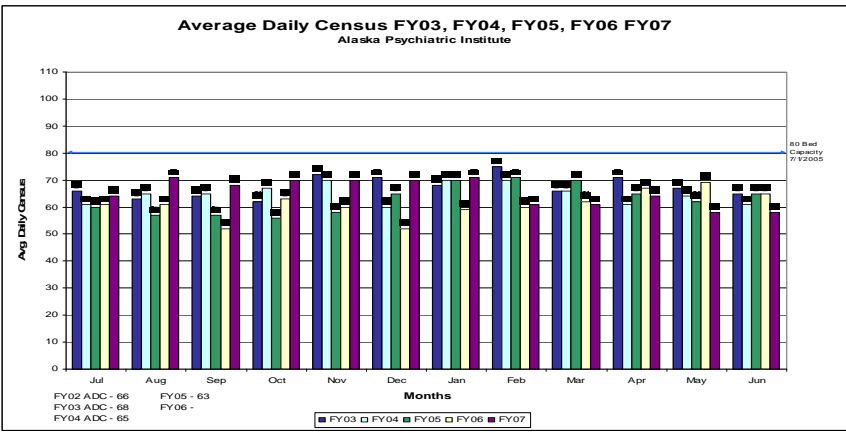
	FY03	FY04	FY05	FY06	FY07
Jul	114	100	110	94	117
Aug	112	85	130	132	110
Sep	98	98	99	104	92
Oct	98	100	100	116	120
Nov	94	83	111	119	97
Dec	99	96	112	104	89
Jan	105	118	116	107	101
Feb	107	105	117	121	81
Mar	105	140	121	140	118
Apr	116	100	152	116	97
May	83	117	123	138	112
Jun	88	103	127	150	100
<b>Total</b>	<b>1219</b>	<b>1245</b>	<b>1418</b>	<b>1441</b>	<b>1234</b>

3



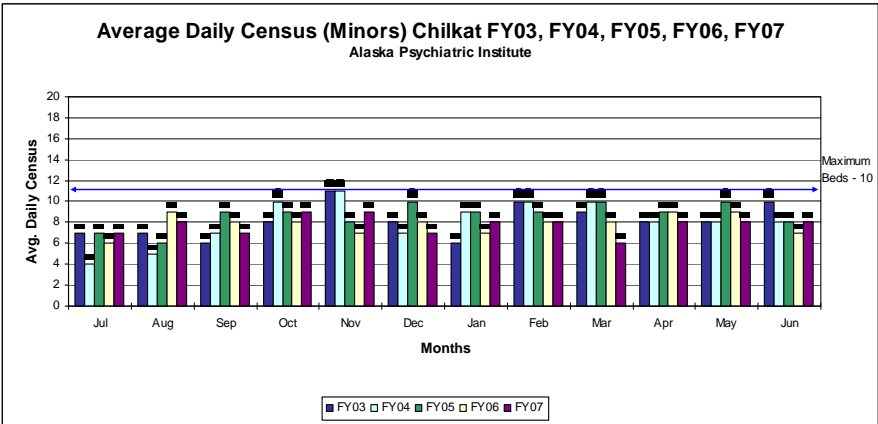
	FY03	FY04	FY05	FY06	FY07
Jul	2043	1896	1871	1892	1999
Aug	1952	2009	1755	1888	2201
Sep	1909	1937	1707	1558	2047
Oct	1924	2063	1739	1956	2175
Nov	2160	2102	1748	1802	2085
Dec	2198	1866	2001	1604	2184
Jan	2110	2167	2169	1814	2193
Feb	2087	2037	1980	1675	1694
Mar	2058	2050	2101	1934	1802
Apr	2138	1835	1935	2015	1903
May	2083	1988	1935	2127	1776
Jun	1956	1832	1951	2015	1727
<b>Total</b>	<b>24618</b>	<b>23782</b>	<b>22892</b>	<b>22280</b>	<b>23886</b>

4



	FY03	FY04	FY05	FY06	FY07
Jul	66	61	60	61	64
Aug	63	65	57	61	71
Sep	64	65	57	52	68
Oct	62	67	56	63	70
Nov	72	70	58	60	70
Dec	71	60	65	52	70
Jan	68	70	70	59	71
Feb	75	70	71	60	61
Mar	66	66	70	62	61
Apr	71	61	65	67	64
May	67	64	62	69	58
Jun	65	61	65	65	58

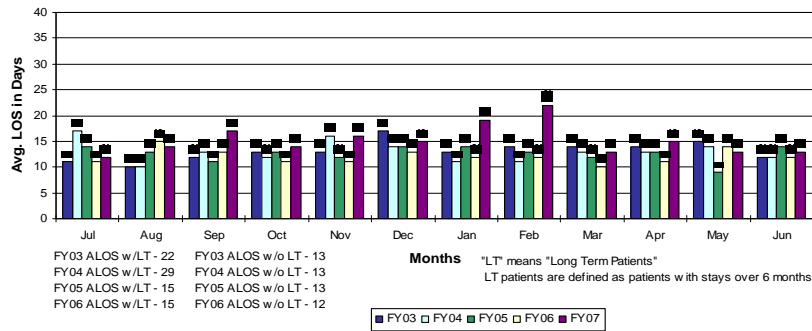
5



	FY03	FY04	FY05	FY06	FY07
Jul	7	4	7	6	7
Aug	7	5	6	9	8
Sep	6	7	9	8	7
Oct	8	10	9	8	9
Nov	11	11	8	7	9
Dec	8	7	10	8	7
Jan	6	9	9	7	8
Feb	10	10	9	8	8
Mar	9	10	10	8	6
Apr	8	8	9	9	8
May	8	8	10	9	8
Jun	10	8	8	7	8

6

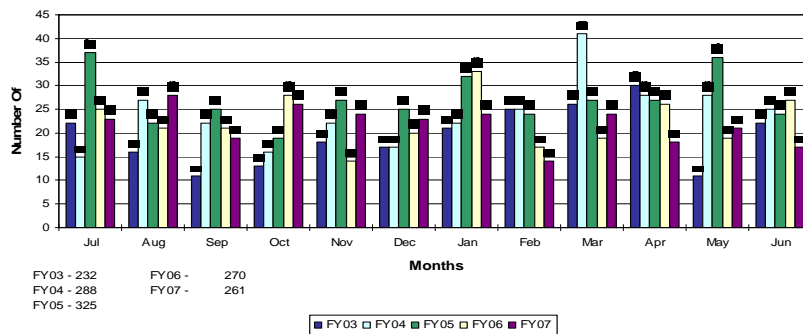
**Average Length of Stay FY03, FY04, FY05, FY06, FY07**  
Alaska Psychiatric Institute



	FY03	FY04	FY05	FY06	FY07
Jul	11	17	14	11	12
Aug	10	10	13	15	14
Sep	12	13	11	13	17
Oct	13	12	13	11	14
Nov	13	16	12	11	16
Dec	17	14	14	13	15
Jan	13	11	14	12	19
Feb	14	11	13	12	22
Mar	14	13	12	10	13
Apr	14	13	13	11	15
May	15	14	9	14	13
Jun	12	12	14	12	13

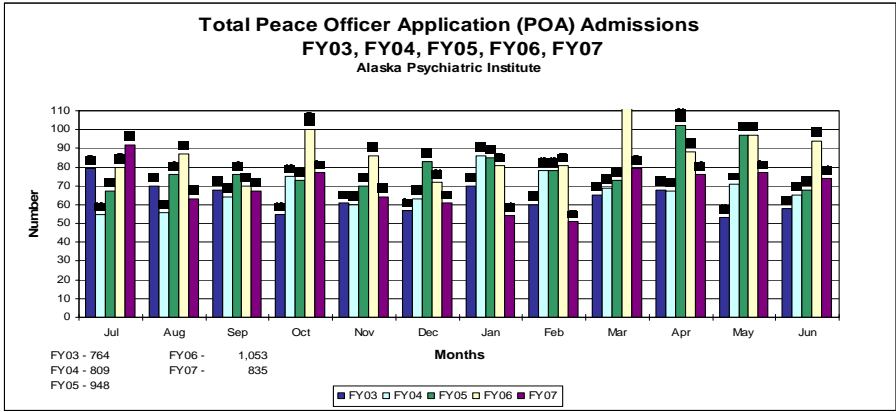
7

**Total ExParte Admissions FY03, FY04, FY05, FY06, FY07**  
Alaska Psychiatric Institute



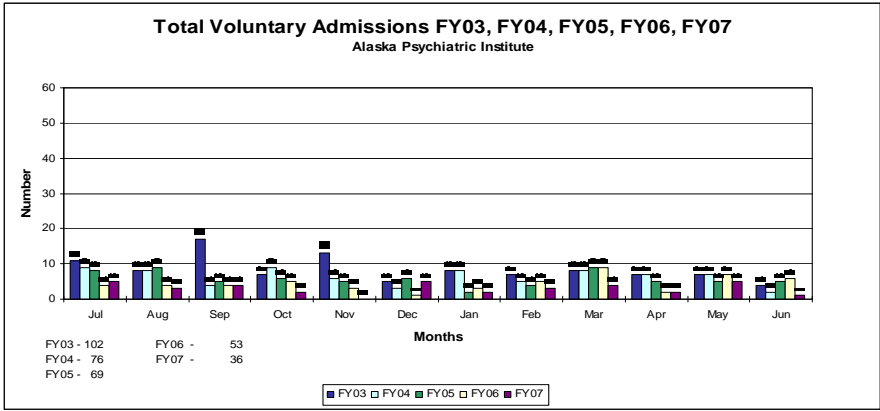
	FY03	FY04	FY05	FY06	FY07
Jul	22	15	37	25	23
Aug	16	27	22	21	28
Sep	11	22	25	21	19
Oct	13	16	19	28	26
Nov	18	22	27	14	24
Dec	17	17	25	20	23
Jan	21	22	32	33	24
Feb	25	25	24	17	14
Mar	26	41	27	19	24
Apr	30	28	27	26	18
May	11	28	36	19	21
Jun	22	25	24	27	17
Total	232	288	325	270	261

8



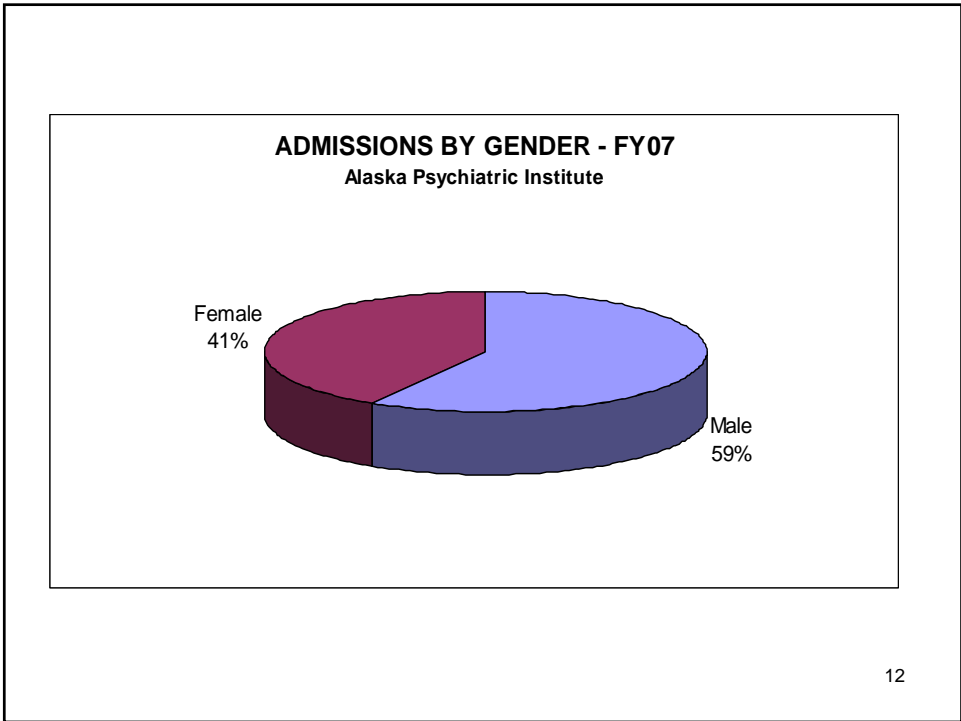
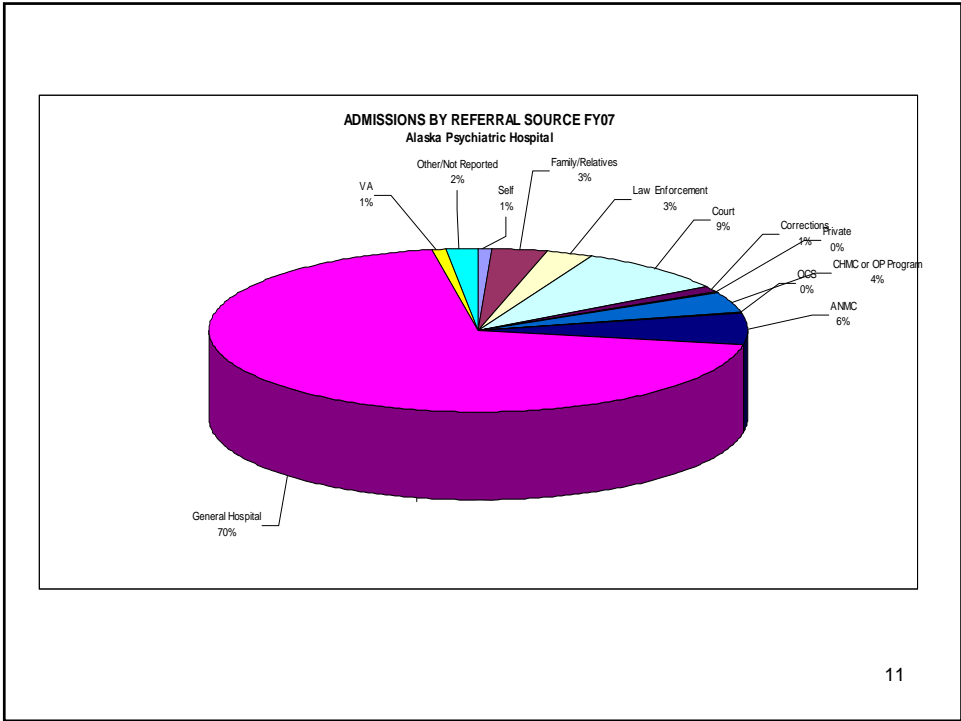
	FY03	FY04	FY05	FY06	FY07
Jul	79	55	67	80	92
Aug	70	56	76	87	63
Sep	68	64	76	70	67
Oct	55	75	73	100	77
Nov	61	60	70	86	64
Dec	57	63	83	72	61
Jan	70	86	85	81	54
Feb	60	78	78	81	51
Mar	65	69	73	117	79
Apr	68	67	102	88	76
May	53	71	97	97	77
Jun	58	65	68	94	74
Total	764	809	948	1053	835

9



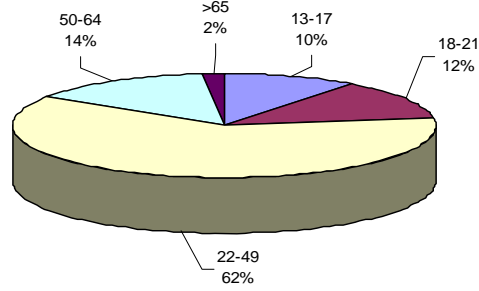
	FY03	FY04	FY05	FY06	FY07
Jul	11	9	8	4	5
Aug	8	8	9	4	3
Sep	17	4	5	4	4
Oct	7	9	6	5	2
Nov	13	6	5	3	0
Dec	5	3	6	1	5
Jan	8	8	2	3	2
Feb	7	5	4	5	3
Mar	8	8	9	9	4
Apr	7	7	5	2	2
May	7	7	5	7	5
Jun	4	2	5	6	1
Total	102	76	69	53	36

10



### ADMISSIONS BY AGE - FY07

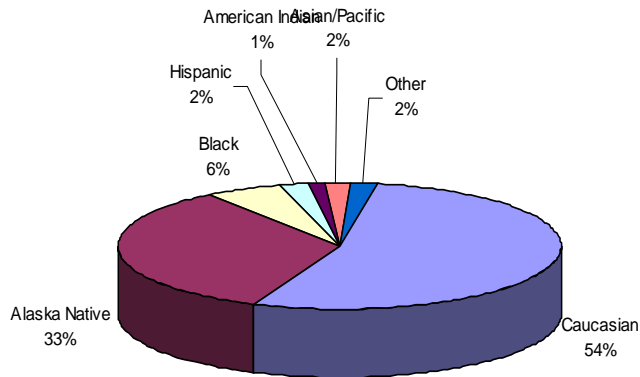
Alaska Psychiatric Institute



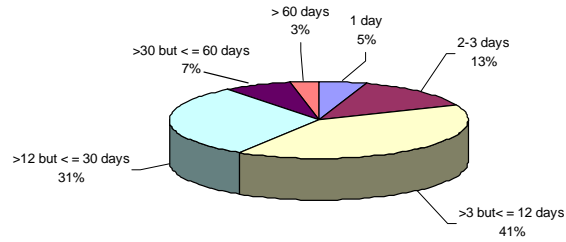
Age	FY07 Total	%
13-17	128	10%
18-21	148	12%
22-49	762	62%
50-64	174	14%
>65	22	2%

### ADMISSIONS BY RACE FY07

Alaska Psychiatric Institute - Alaska Recovery Center



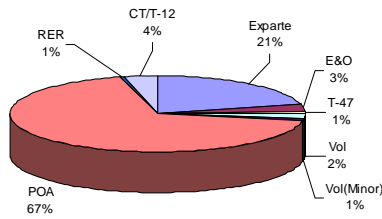
**LENGTH OF STAY FY07 (Based on Discharge Days)**  
**Alaska Psychiatric Institute**



LOS	FY07 Total	%
1 day	66	5%
2-3 days	163	13%
>3 but <= 12 days	496	41%
>12 but <= 30 days	380	31%
>30 but <= 60 days	90	7%
> 60 days	39	3%

15

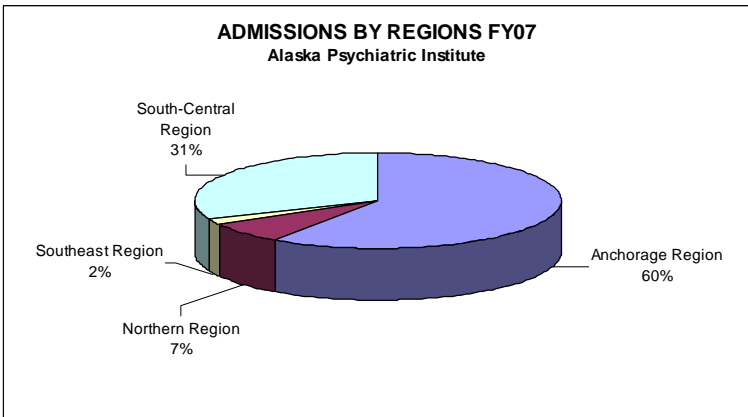
**ADMISSIONS BY LEGAL STATUS FY07**  
**Alaska Psychiatric Institute**



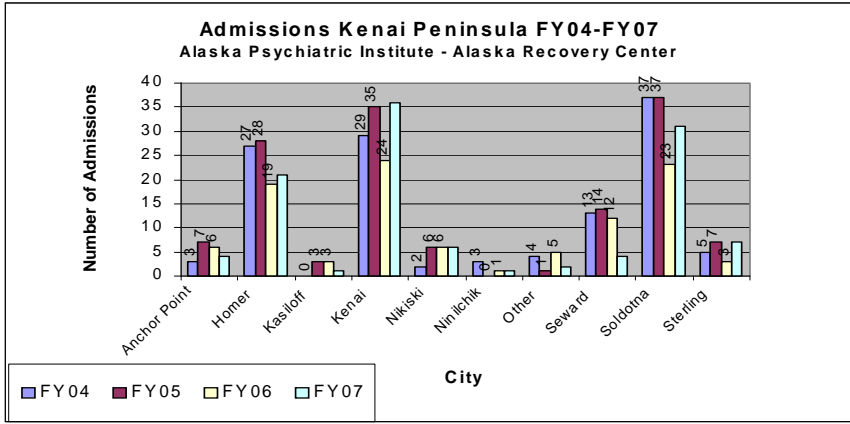
Status	FY07 Total	%
Exparte	261	21%
E&O	37	3%
T-47	10	1%
Vol	24	2%
Vol(Minor)	12	1%
POA	835	67%
RER	8	1%
CT/T-12	44	4%
CP	0	0%

16

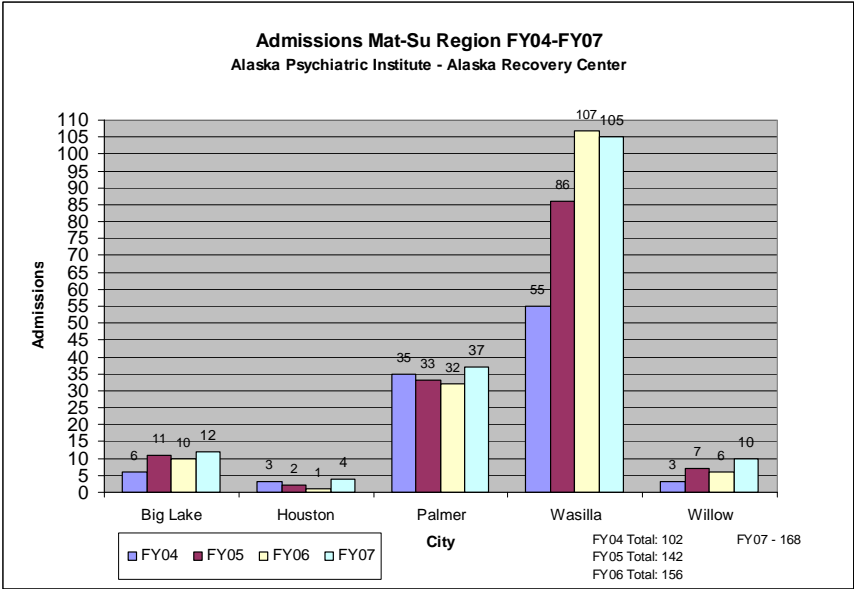




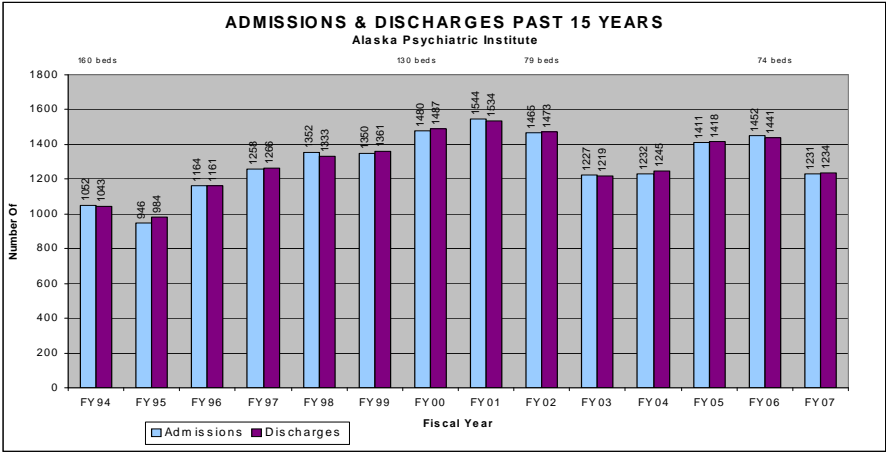
Region	FY07 Total	%
Anchorage Region	732	60%
Northern Region	88	7%
Southeast Region	25	2%
South-Central Region	387	31%
Not Reported	0	



City	FY04	FY05	FY06	FY07
Anchor Point	3	7	6	4
Homer	27	28	19	21
Kasiloff	0	3	3	1
Kenai	29	35	24	36
Nikiski	2	6	6	6
Ninilchik	3	0	1	1
Other	4	1	5	2
Seward	13	14	12	4
Soldotna	37	37	23	31
Sterling	5	7	3	7
<b>Total</b>	<b>123</b>	<b>138</b>	<b>102</b>	<b>113</b>

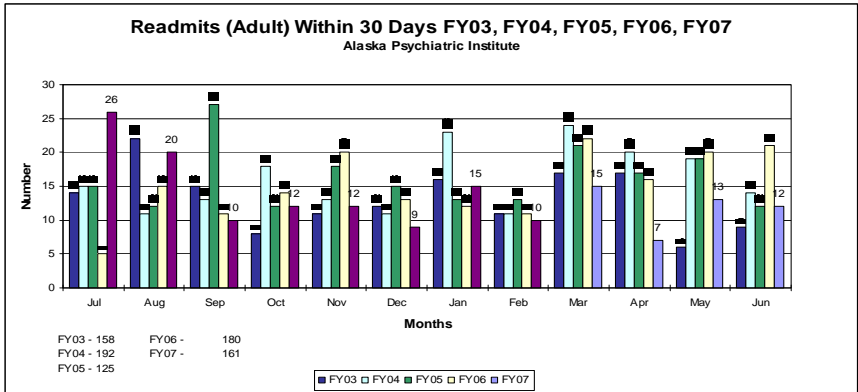


19

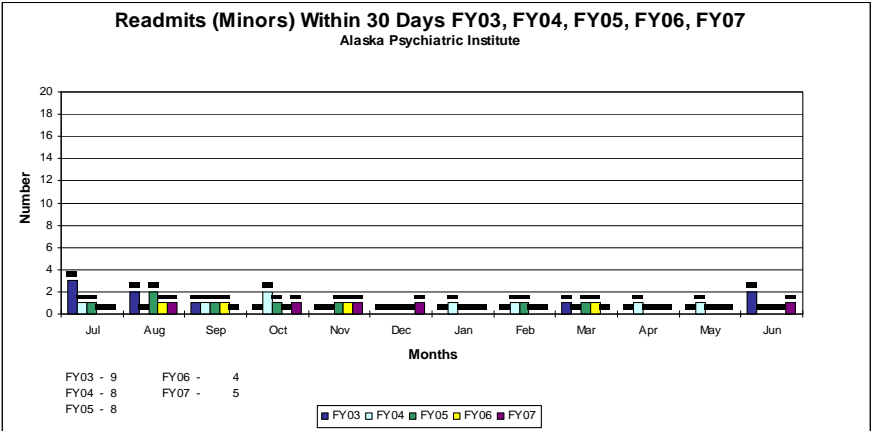


	FY93	FY94	FY95	FY96	FY97	FY98	FY99	FY00	FY01	FY02	FY03	FY04	FY05	FY06	FY07
<b>Admissions</b>	1000	1052	946	1164	1258	1352	1350	1480	1544	1465	1227	1232	1411	1452	1231
<b>Discharges</b>	976	1043	984	1161	1266	1333	1361	1487	1534	1473	1219	1245	1418	1441	1234

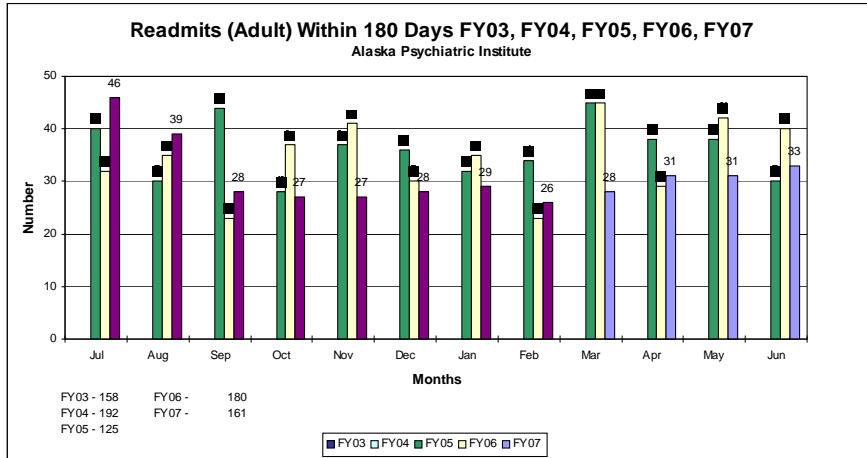
20



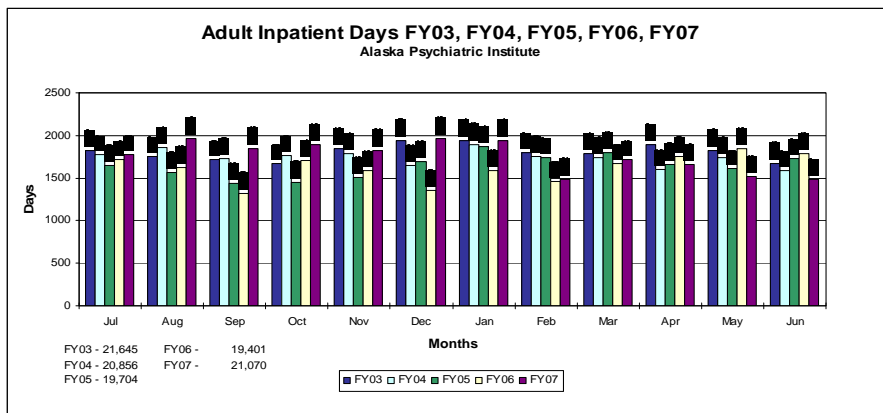
21



22

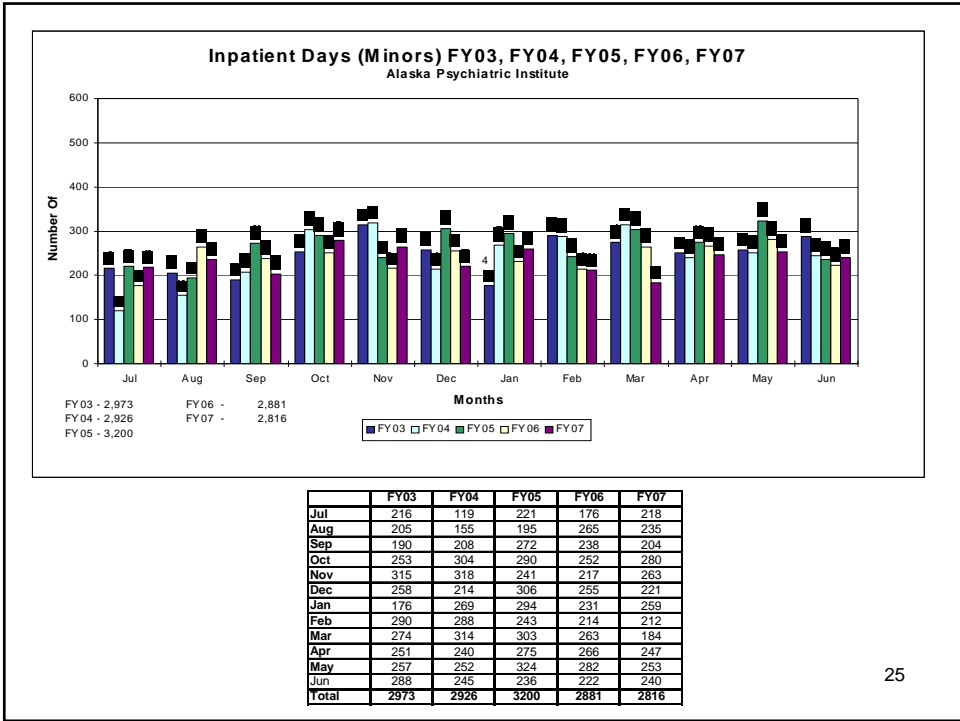


23

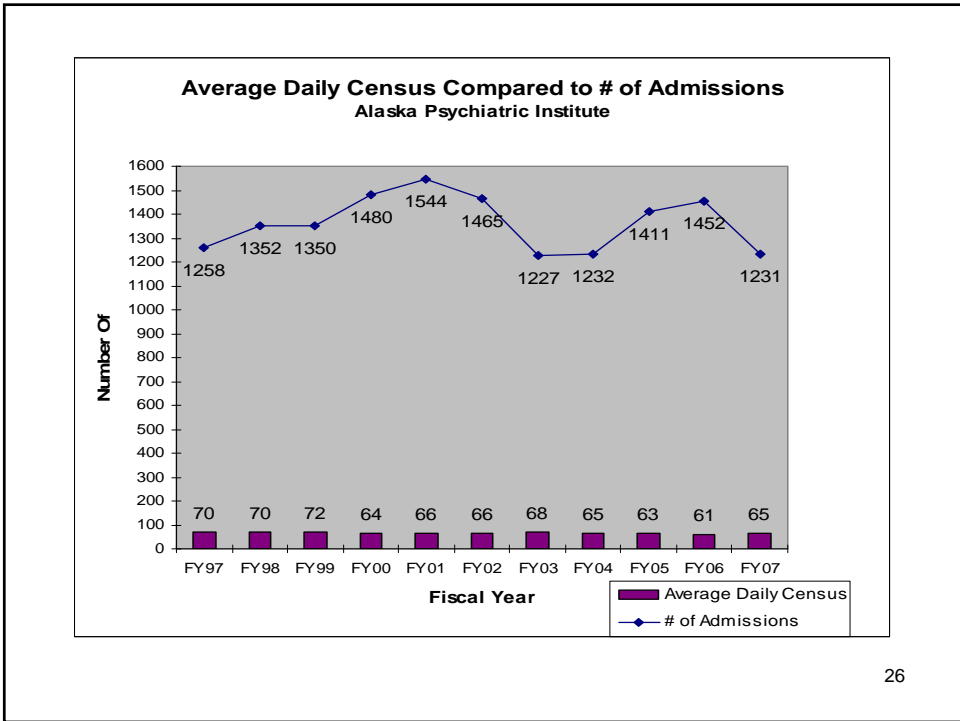


	FY03	FY04	FY05	FY06	FY07
Jul	1827	1777	1650	1716	1781
Aug	1747	1854	1560	1623	1966
Sep	1719	1729	1435	1320	1843
Oct	1671	1759	1449	1704	1895
Nov	1845	1784	1508	1585	1822
Dec	1940	1652	1695	1350	1963
Jan	1934	1898	1874	1583	1934
Feb	1797	1749	1737	1461	1482
Mar	1784	1736	1798	1671	1718
Apr	1887	1595	1660	1750	1656
May	1826	1736	1611	1845	1523
Jun	1668	1587	1727	1793	1487
Total	21645	20856	19704	19401	21070

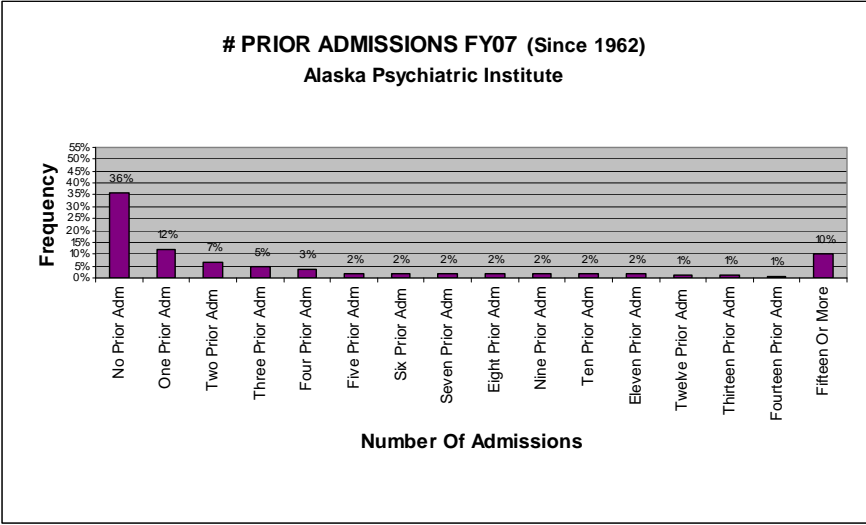
24



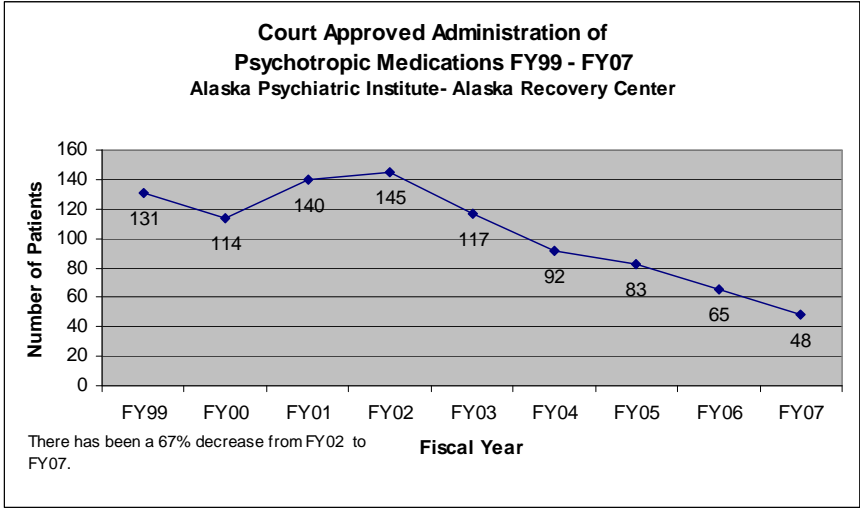
25



26



27



28