

Vermont Mental Health Performance Indicator Project

DDMHS, Weeks Building, 103 South Main Street, Waterbury, VT 05671-1601 (802-241-2638)

MEMORANDUM

TO: Vermont Mental Health Performance Indicator Project
Advisory Group and Interested Parties

FROM: John Pandiani and Sheila Pomeroy

DATE: March 19, 2004

RE: Involuntary Treatment at the Vermont State Hospital

This week's PIP focuses on the utilization of involuntary treatment (seclusion, restraint, and medication) at the Vermont State Hospital during calendar years 1990 through 2003. This PIP follows the recommendation of Vermont's Mental Health Performance Indicator Project that indicators of practice patterns include "...the degree to which services are accepted on a voluntary basis and the degree to which participation is involuntary..." (<http://www.ddmhs.state.vt.us/docs/PIPs/pipPerfIndRecs.pdf>).

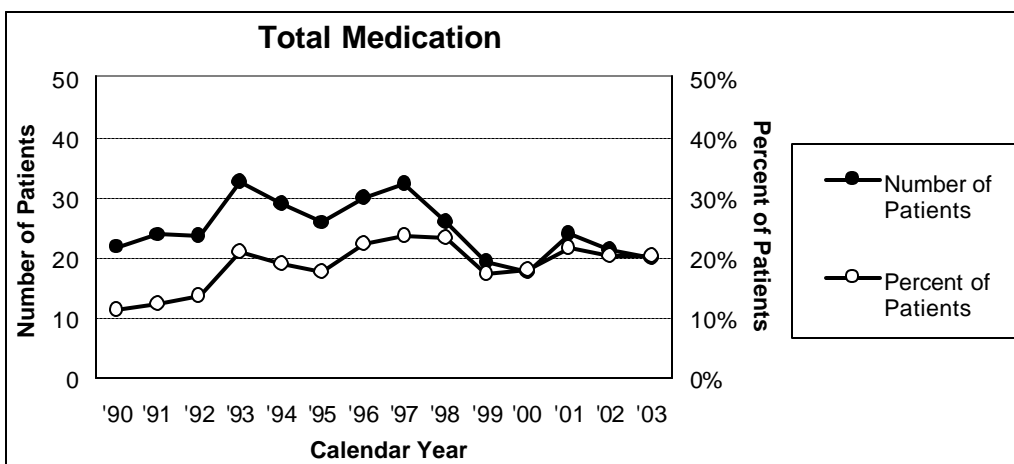
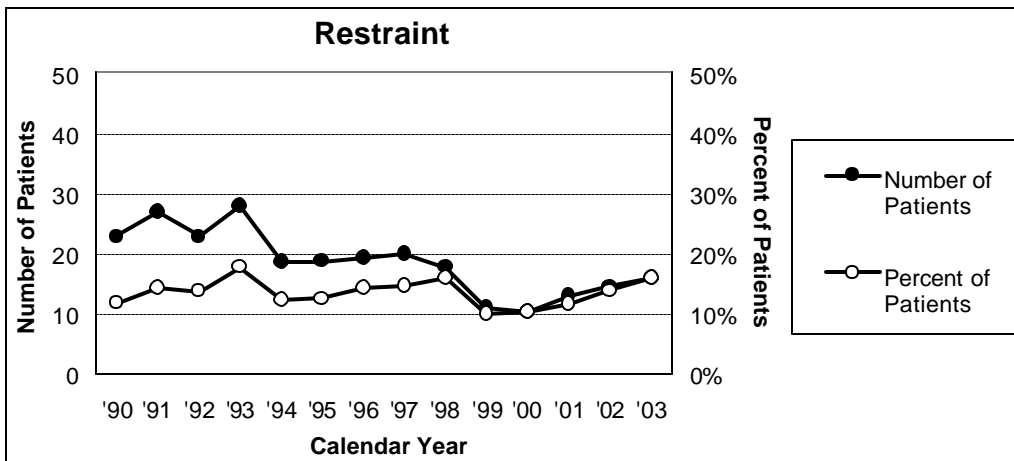
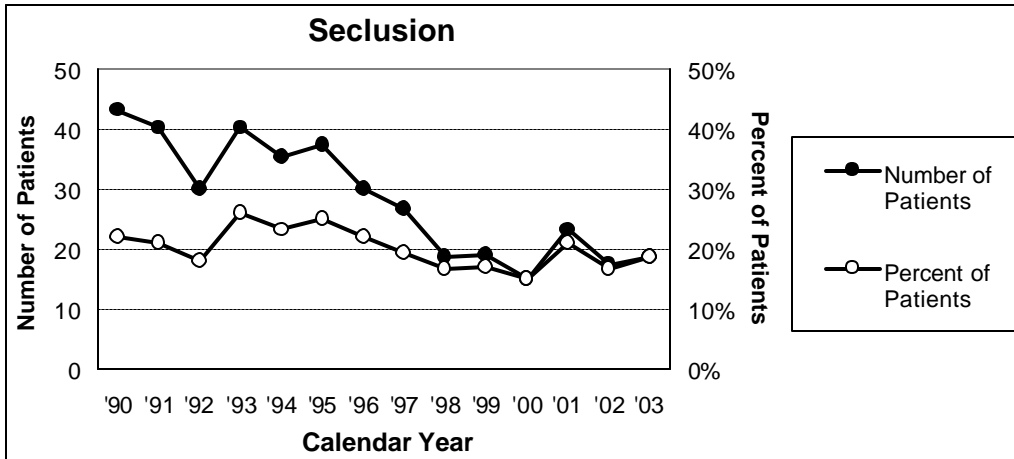
The attachments include summary graphs of average annual numbers of people and rates for each type of involuntary treatment, as well as detailed tables and figures for each calendar quarter during the report period. The most recent PIP including detailed tables and figures of this nature was distributed on May 17, 2002.

(<http://www.ddmhs.state.vt.us/docs/pips/2002/pip051702.pdf>). The average annual number and percent of patients receiving each type of involuntary treatment are averages of quarterly numbers and rates.

As you will see, the overall trend is toward less seclusion from a quarterly average of 43 patients in 1990 to less than 20 patients for three of the last four years. In terms of proportion of VSH patients trend has also been toward less seclusion, although the change has been less pronounced. There is also a general trend toward a smaller percent of patients being restrained (much of it due to decreasing patient populations) during 1990 through 2000, but this was followed by a small increase in both the number and percent of individuals being put in seclusion. Involuntary medication, in contrast, has tended to increase in terms of the proportion of VSH patients from 11% in 1990 to 24% in 1997, and then to stabilize at about 20% for the last two years. The number of patients receiving involuntary medication was highest during 1993 through 1998 than during the earlier or later years.

We look forward to your comments, questions, and suggestions for further analysis of data regarding involuntary treatment. As always, you can reach us at 802-241-2638 or by e-mail to pip@ddmhs.state.vt.us.

**INVOLUNTARY TREATMENT
AT THE VERMONT STATE HOSPITAL
AVERAGE ANNUAL NUMBERS OF PEOPLE AND RATES
CALENDAR YEARS: 1990 TO 2003**



Analysis based on data from the Vermont State Hospital Involuntary Treatment database and the Vermont State Hospital Episodes database. The average annual number and percent of patients receiving each type of involuntary treatment are averages of quarterly numbers and rates.

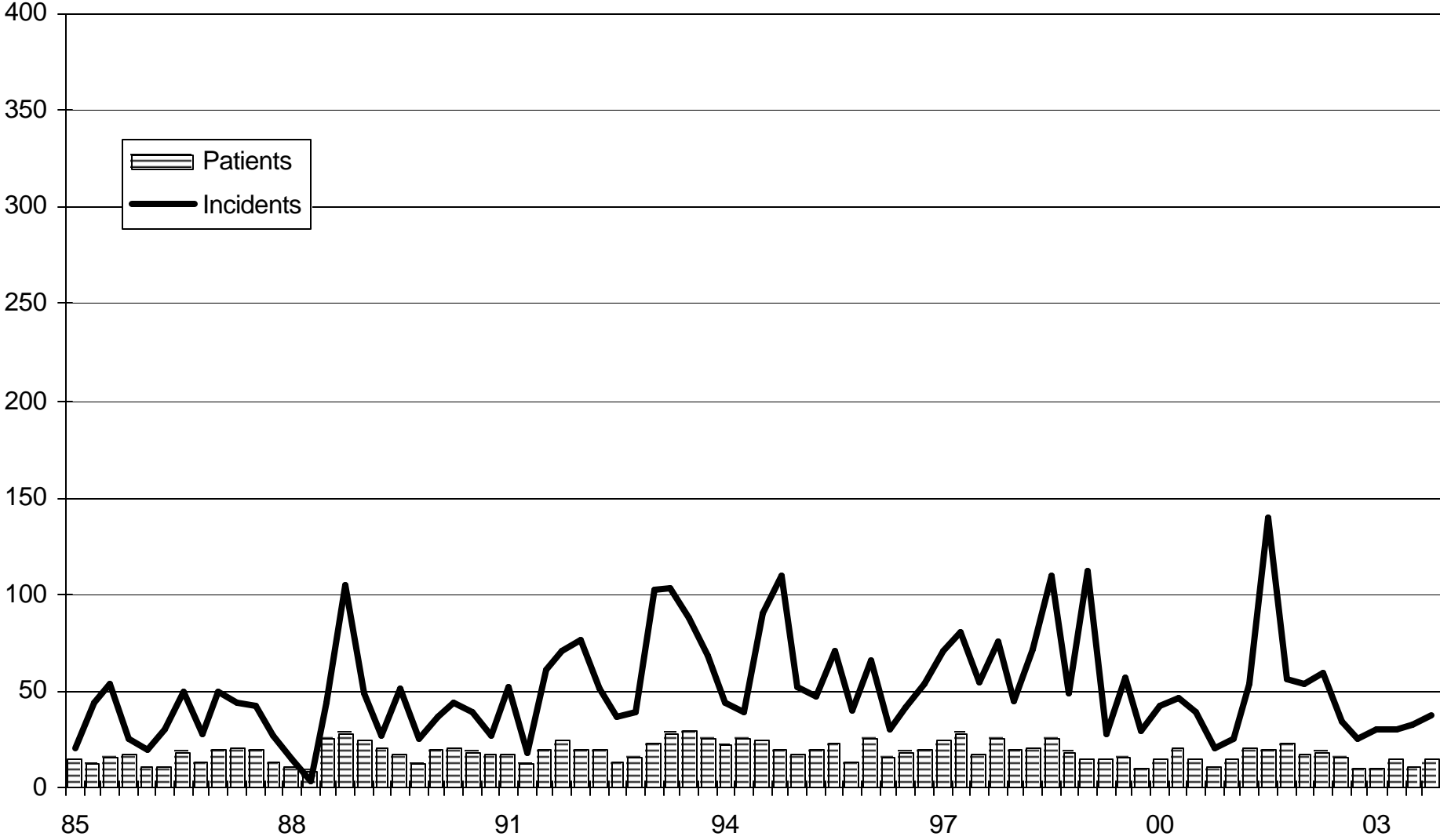
**INVOLUNTARY TREATMENT
AT THE VERMONT STATE HOSPITAL
JANUARY 1985 - DECEMBER 2003**

Prepared by

Research & Statistics Unit
Department of Developmental and Mental Health Services
103 South Main Street
Waterbury, VT 05671-1601

March 19, 2004

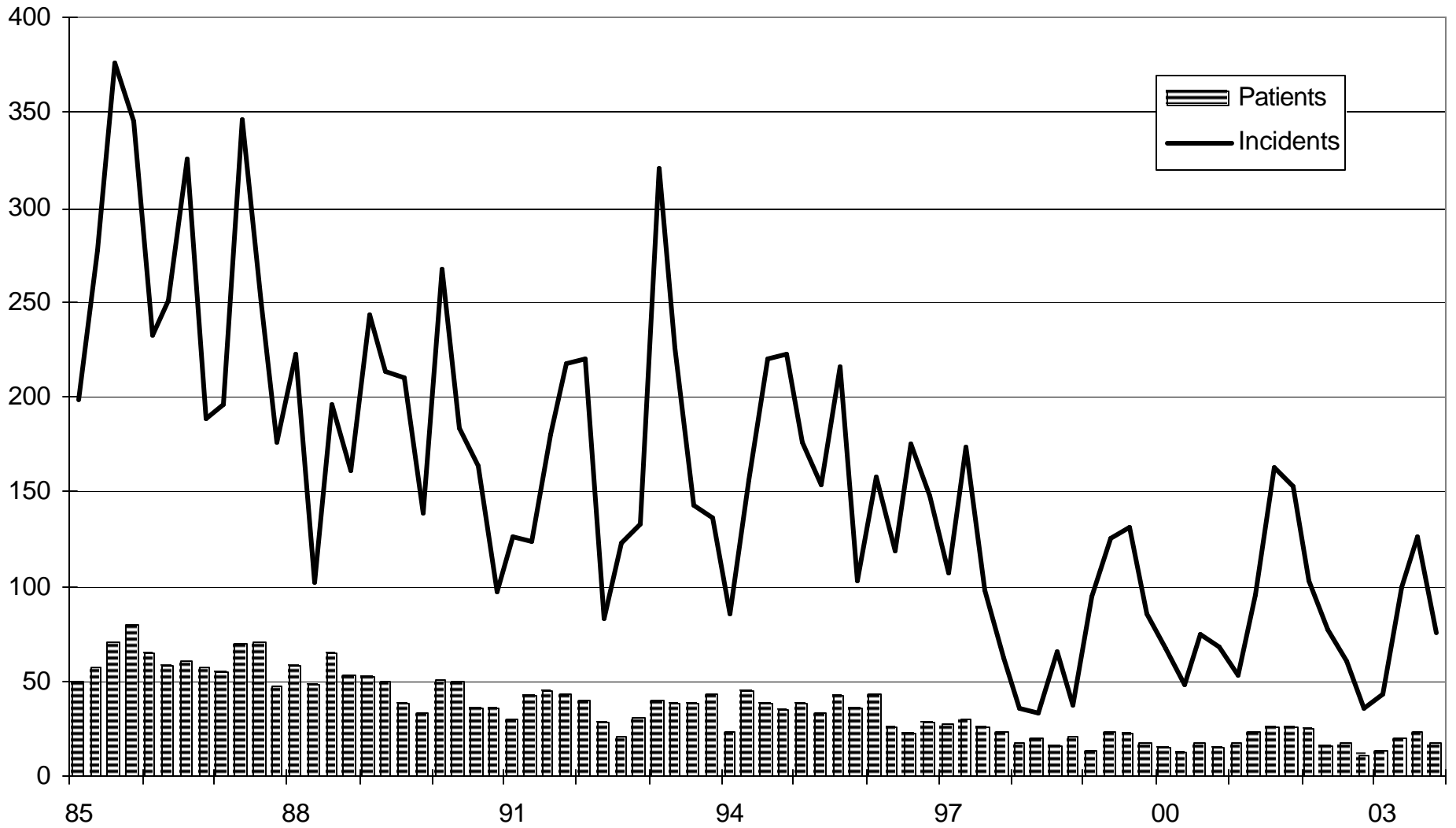
EMERGENCY INVOLUNTARY MEDICATION at the Vermont State Hospital January 1985 - December 2003



INVOLUNTARY MEDICATION
AT THE VERMONT STATE HOSPITAL
JANUARY 1, 1990 - DECEMBER 31, 2003

Quarter	Patients Involuntarily Medicated						Incidents of Emergency Involuntary Medication		
	Emergency		Non Emergency		Total		Rate(Incidents per Patient Year)		
	#	%	#	%	#	%	#		
1990									
I.	Jan - March	19	10%	2	1%	21	11%	37	1.4
II.	April - June	21	10%	5	2%	24	12%	44	1.6
III.	July - Sept	18	10%	4	2%	22	12%	39	1.3
IV.	Oct - Dec	17	9%	4	2%	20	10%	27	1.0
1991									
I.	Jan - March	17	9%	10	5%	24	12%	52	2.0
II.	April - June	12	7%	7	4%	18	10%	18	0.8
III.	July - Sept	20	11%	5	3%	23	12%	61	2.4
IV.	Oct - Dec	24	12%	7	4%	30	15%	70	2.6
1992									
I.	Jan - March	19	10%	7	4%	27	14%	77	3.1
II.	April - June	20	12%	9	5%	29	17%	51	2.1
III.	July - Sept	13	9%	8	5%	17	11%	36	1.6
IV.	Oct - Dec	16	10%	7	4%	21	13%	39	1.7
1993									
I.	Jan - March	23	15%	6	4%	28	18%	102	4.5
II.	April - June	28	19%	6	4%	32	22%	103	5.0
III.	July - Sept	29	18%	11	7%	37	23%	88	4.1
IV.	Oct - Dec	25	16%	13	8%	33	21%	68	3.1
1994									
I.	Jan - March	22	15%	10	7%	28	19%	44	2.2
II.	April - June	25	17%	8	5%	30	20%	39	2.2
III.	July - Sept	24	15%	7	4%	30	19%	90	4.8
IV.	Oct - Dec	20	13%	7	5%	28	18%	109	5.3
1995									
I.	Jan - March	17	12%	12	9%	24	17%	52	2.9
II.	April - June	20	16%	10	8%	27	19%	47	2.5
III.	July - Sept	23	15%	12	8%	30	20%	70	3.6
IV.	Oct - Dec	13	8%	13	8%	22	14%	40	2.0
1996									
I.	Jan - March	26	17%	12	8%	35	23%	66	3.4
II.	April - June	16	12%	14	11%	28	21%	30	1.8
III.	July - Sept	18	12%	13	10%	27	21%	41	2.6
IV.	Oct - Dec	20	16%	16	13%	30	24%	53	3.3
1997									
I.	Jan - March	24	20%	12	10%	32	26%	71	4.2
II.	April - June	28	20%	14	10%	39	27%	80	4.3
III.	July - Sept	17	11%	11	7%	24	15%	55	3.3
IV.	Oct - Dec	25	19%	16	12%	34	26%	75	5.3
1998									
I.	Jan - March	20	16%	11	9%	29	23%	45	3.3
II.	April - June	21	18%	4	3%	23	20%	72	5.0
III.	July - Sept	25	25%	9	9%	29	29%	109	7.7
IV.	Oct - Dec	18	17%	6	6%	23	21%	49	3.6
1999									
I.	Jan - March	15	14%	7	7%	19	18%	112	9.1
II.	April - June	14	12%	8	7%	20	18%	28	2.1
III.	July - Sept	16	14%	8	7%	21	18%	57	3.9
IV.	Oct - Dec	10	9%	10	9%	17	15%	29	2.1
2000									
I.	Jan - March	14	15%	9	9%	20	21%	43	3.9
II.	April - June	21	23%	5	6%	21	23%	46	4.1
III.	July - Sept	15	14%	5	5%	17	16%	39	3.2
IV.	Oct - Dec	11	10%	4	4%	12	11%	21	1.5
2001									
I.	Jan - March	14	14%	10	10%	19	18%	25	1.9
II.	April - June	21	19%	10	9%	25	23%	54	4.3
III.	July - Sept	20	16%	10	8%	25	20%	140	11.0
IV.	Oct - Dec	23	21%	6	6%	27	25%	56	4.2
2002									
I.	Jan - March	17	16%	11	11%	23	22%	54	4.0
II.	April - June	18	17%	7	7%	23	22%	59	4.2
III.	July - Sept	16	15%	8	7%	23	21%	34	2.3
IV.	Oct - Dec	10	10%	13	13%	16	16%	26	2.0
2003									
I.	Jan - March	10	10%	10	10%	16	16%	30	2.4
II.	April - June	14	14%	17	17%	25	25%	30	2.4
III.	July - Sept	11	10%	13	12%	18	16%	33	2.5
IV.	Oct - Dec	15	17%	12	13%	21	24%	38	2.8

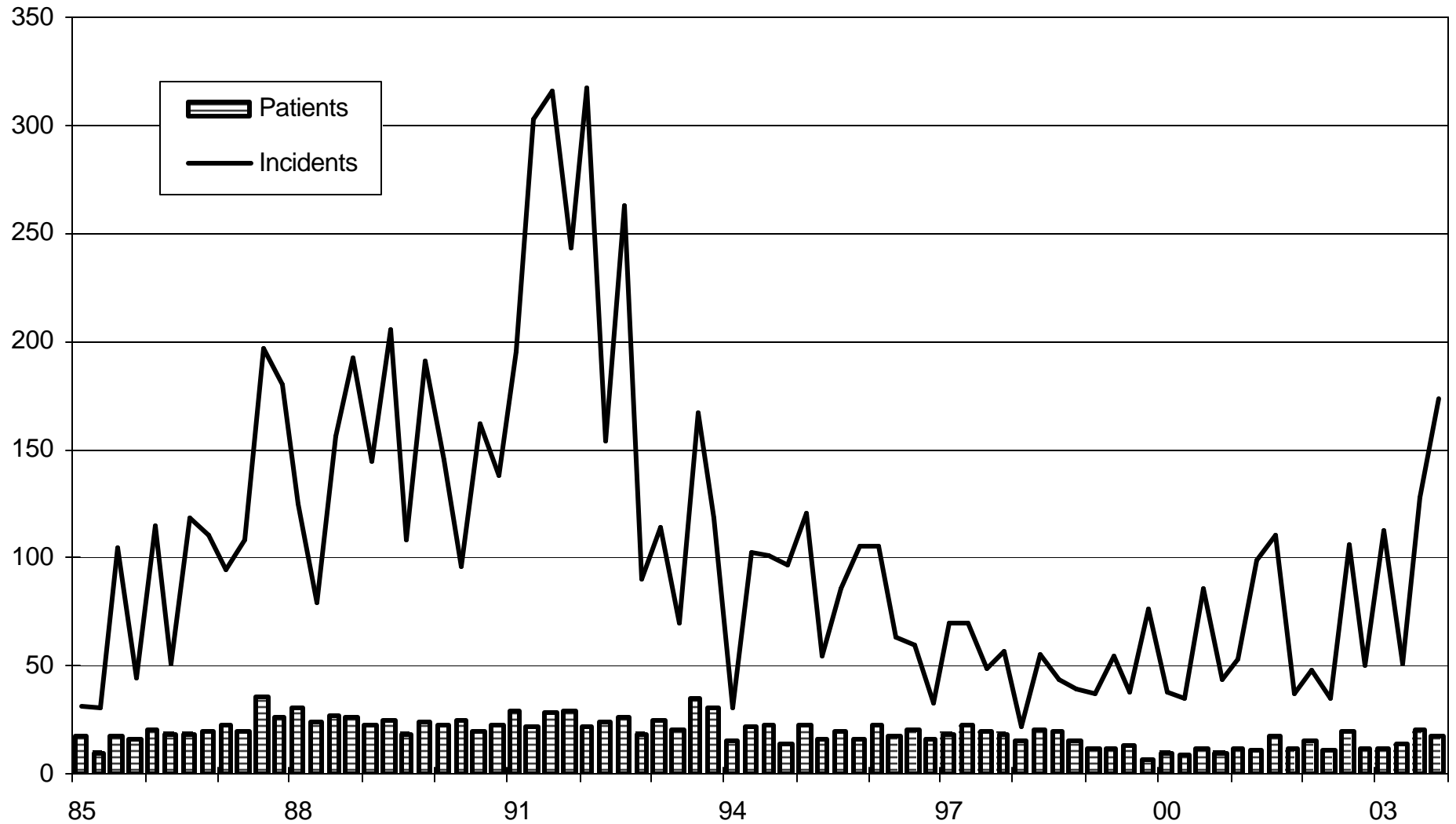
INVOLUNTARY SECLUSION at the Vermont State Hospital January 1985 - December 2003



INVOLUNTARY SECLUSION
AT THE VERMONT STATE HOSPITAL
JANUARY 1, 1990 - DECEMBER 31, 2003

Quarter	Patients Secluded		Seclusion Incidents		
	Number	Percent of all Patients	Number	Rate (Incidents per Patient Year)	
1990					
I.	Jan - March	51	26%	267	9.9
II.	April - June	50	25%	184	6.5
III.	July - Sept	36	19%	164	5.6
IV.	Oct - Dec	36	18%	97	3.4
1991					
I.	Jan - March	30	15%	127	4.9
II.	April - June	42	23%	124	5.3
III.	July - Sept	45	24%	180	7.0
IV.	Oct - Dec	44	22%	218	8.2
1992					
I.	Jan - March	40	21%	220	8.7
II.	April - June	28	17%	83	3.4
III.	July - Sept	21	14%	123	5.3
IV.	Oct - Dec	31	20%	133	5.7
1993					
I.	Jan - March	40	26%	320	14.2
II.	April - June	39	26%	226	11.0
III.	July - Sept	39	24%	143	6.6
IV.	Oct - Dec	43	28%	137	6.2
1994					
I.	Jan - March	24	16%	86	4.2
II.	April - June	45	30%	157	8.9
III.	July - Sept	38	24%	220	11.8
IV.	Oct - Dec	35	23%	222	10.9
1995					
I.	Jan - March	38	27%	176	9.9
II.	April - June	34	24%	154	8.2
III.	July - Sept	42	27%	216	11.2
IV.	Oct - Dec	36	22%	103	5.1
1996					
I.	Jan - March	44	29%	158	8.0
II.	April - June	26	19%	119	7.0
III.	July - Sept	22	17%	175	10.9
IV.	Oct - Dec	28	23%	148	9.2
1997					
I.	Jan - March	27	22%	107	6.3
II.	April - June	30	21%	174	9.3
III.	July - Sept	26	16%	98	5.9
IV.	Oct - Dec	24	18%	62	4.4
1998					
I.	Jan - March	18	14%	36	2.6
II.	April - June	20	17%	33	2.3
III.	July - Sept	16	16%	66	4.6
IV.	Oct - Dec	21	19%	37	2.7
1999					
I.	Jan - March	14	13%	95	7.7
II.	April - June	23	20%	125	9.4
III.	July - Sept	22	19%	132	9.0
IV.	Oct - Dec	17	15%	86	6.1
2000					
I.	Jan - March	15	16%	67	6.0
II.	April - June	13	14%	48	4.2
III.	July - Sept	17	16%	75	6.1
IV.	Oct - Dec	15	14%	68	4.8
2001					
I.	Jan - March	18	17%	53	3.9
II.	April - June	23	21%	96	7.6
III.	July - Sept	26	21%	163	12.8
IV.	Oct - Dec	26	24%	153	11.4
2002					
I.	Jan - March	25	24%	103	7.6
II.	April - June	16	15%	77	5.5
III.	July - Sept	18	17%	61	4.2
IV.	Oct - Dec	11	11%	36	2.7
2003					
I.	Jan - March	14	14%	43	3.5
II.	April - June	20	20%	99	7.9
III.	July - Sept	23	21%	127	9.6
IV.	Oct - Dec	18	20%	76	5.7

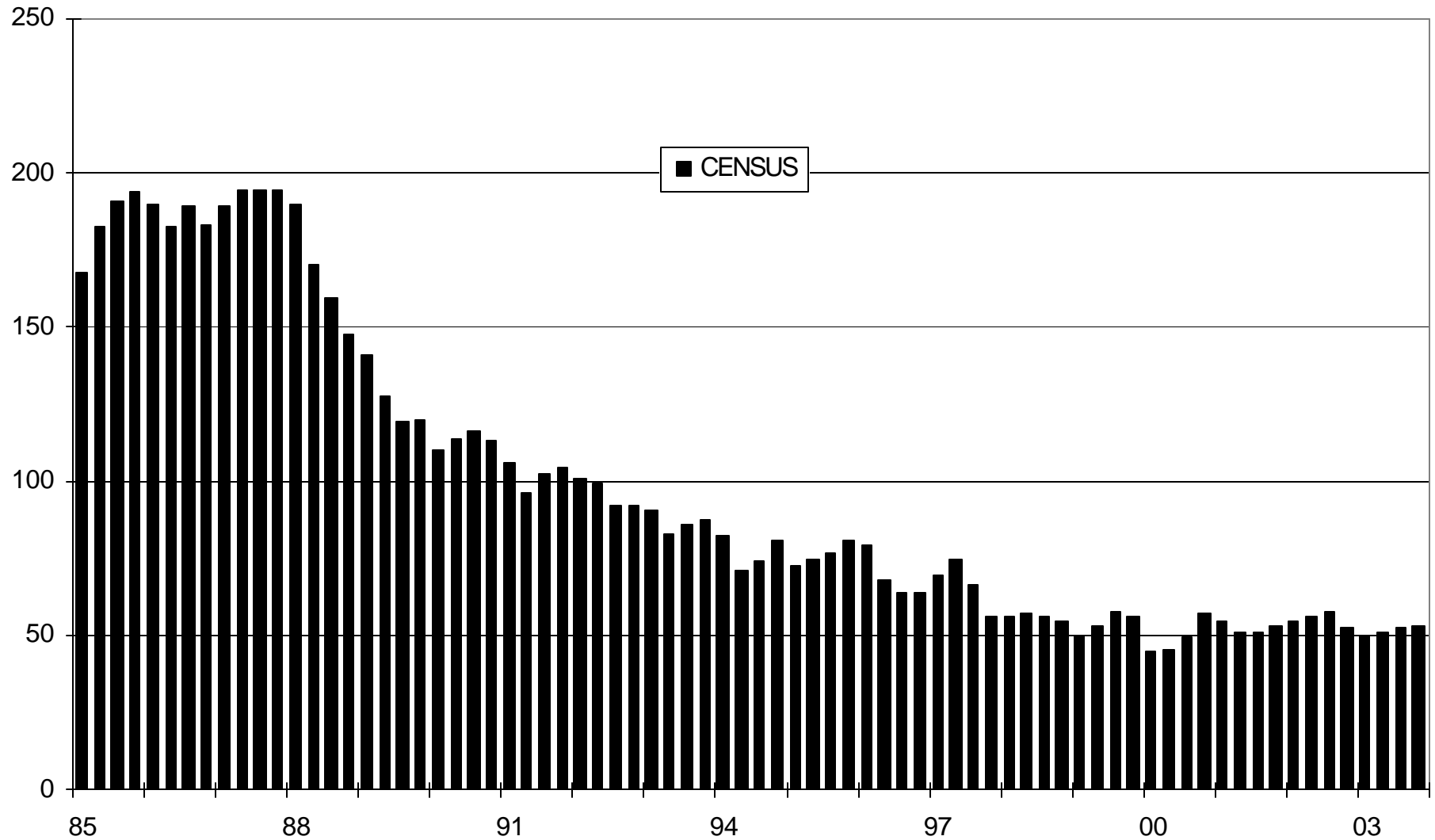
INVOLUNTARY RESTRAINT at the Vermont State Hospital January 1985 - December 2003



INVOLUNTARY RESTRAINT
AT THE VERMONT STATE HOSPITAL
JANUARY 1, 1990 - DECEMBER 31, 2003

Quarter	Patients Restrained					Restraint Incidents			
	Number			Percent of all Patients	Number			Rate (Incidents per Patient Year)	
	VSH	VNH	Total		VSH	VNH	Total		
1990									
I.	Jan - March	15	8	23	12%	59	87	146	5.4
II.	April - June	18	7	25	12%	52	44	96	3.4
III.	July - Sept	10	10	20	11%	86	76	162	5.5
IV.	Oct - Dec	14	9	23	12%	56	82	138	4.9
1991									
I.	Jan - March	21	8	29	15%	121	75	196	7.5
II.	April - June	15	7	22	12%	175	128	303	12.9
III.	July - Sept	20	8	28	15%	125	191	316	12.3
IV.	Oct - Dec	23	6	29	15%	180	63	243	9.2
1992									
I.	Jan - March	18	4	22	12%	294	23	317	12.6
II.	April - June	20	4	24	14%	143	11	154	12.3
III.	July - Sept	21	5	26	17%	219	10	263	11.3
IV.	Oct - Dec	15	4	19	12%	69	21	90	3.9
1993									
I.	Jan - March	18	7	25	16%	74	40	114	5.1
II.	April - June	17	4	21	14%	60	10	70	3.4
III.	July - Sept	30	5	35	22%	145	22	167	7.7
IV.	Oct - Dec	24	6	30	19%	98	20	118	5.3
1994									
I.	Jan - March	12	3	15	10%	22	8	30	1.5
II.	April - June	22	0	22	15%	102	0	102	5.8
III.	July - Sept	23	0	23	15%	101	0	101	5.4
IV.	Oct - Dec	14	0	14	9%	97	0	97	4.7
1995									
I.	Jan - March	23		23	16%	121		121	6.8
II.	April - June	16		16	11%	54		54	2.9
III.	July - Sept	20		20	13%	86		86	4.5
IV.	Oct - Dec	16		16	10%	105		105	5.2
1996									
I.	Jan - March	23		23	15%	105		105	5.3
II.	April - June	17		17	13%	63		63	3.7
III.	July - Sept	21		21	16%	60		60	3.7
IV.	Oct - Dec	16		16	13%	33		33	2.0
1997									
I.	Jan - March	19		19	16%	70		70	4.1
II.	April - June	23		23	16%	70		70	3.7
III.	July - Sept	20		20	13%	49		49	2.9
IV.	Oct - Dec	18		18	14%	57		57	4.0
1998									
I.	Jan - March	15		15	12%	22		22	1.6
II.	April - June	21		21	18%	55		55	3.8
III.	July - Sept	20		20	20%	44		44	3.1
IV.	Oct - Dec	15		15	14%	39		39	2.9
1999									
I.	Jan - March	12		12	11%	37		37	3.0
II.	April - June	12		12	11%	54		54	4.1
III.	July - Sept	13		13	11%	38		38	2.6
IV.	Oct - Dec	7		7	6%	76		76	5.4
2000									
I.	Jan - March	10		10	11%	38		38	3.4
II.	April - June	9		9	10%	35		35	3.1
III.	July - Sept	12		12	11%	86		86	7.0
IV.	Oct - Dec	10		10	9%	44		44	3.1
2001									
I.	Jan - March	12		12	12%	53		53	3.9
II.	April - June	11		11	10%	99		99	7.9
III.	July - Sept	17		17	14%	111		111	8.7
IV.	Oct - Dec	12		12	11%	37		37	2.8
2002									
I.	Jan - March	15		15	14%	48		48	3.5
II.	April - June	11		11	10%	35		35	2.5
III.	July - Sept	20		20	19%	107		107	7.3
IV.	Oct - Dec	12		12	12%	50		50	3.8
2003									
I.	Jan - March	12		12	12%	113		113	9.2
II.	April - June	14		14	14%	51		51	4.1
III.	July - Sept	21		21	19%	128		128	9.7
IV.	Oct - Dec	17		17	19%	174		174	13.0

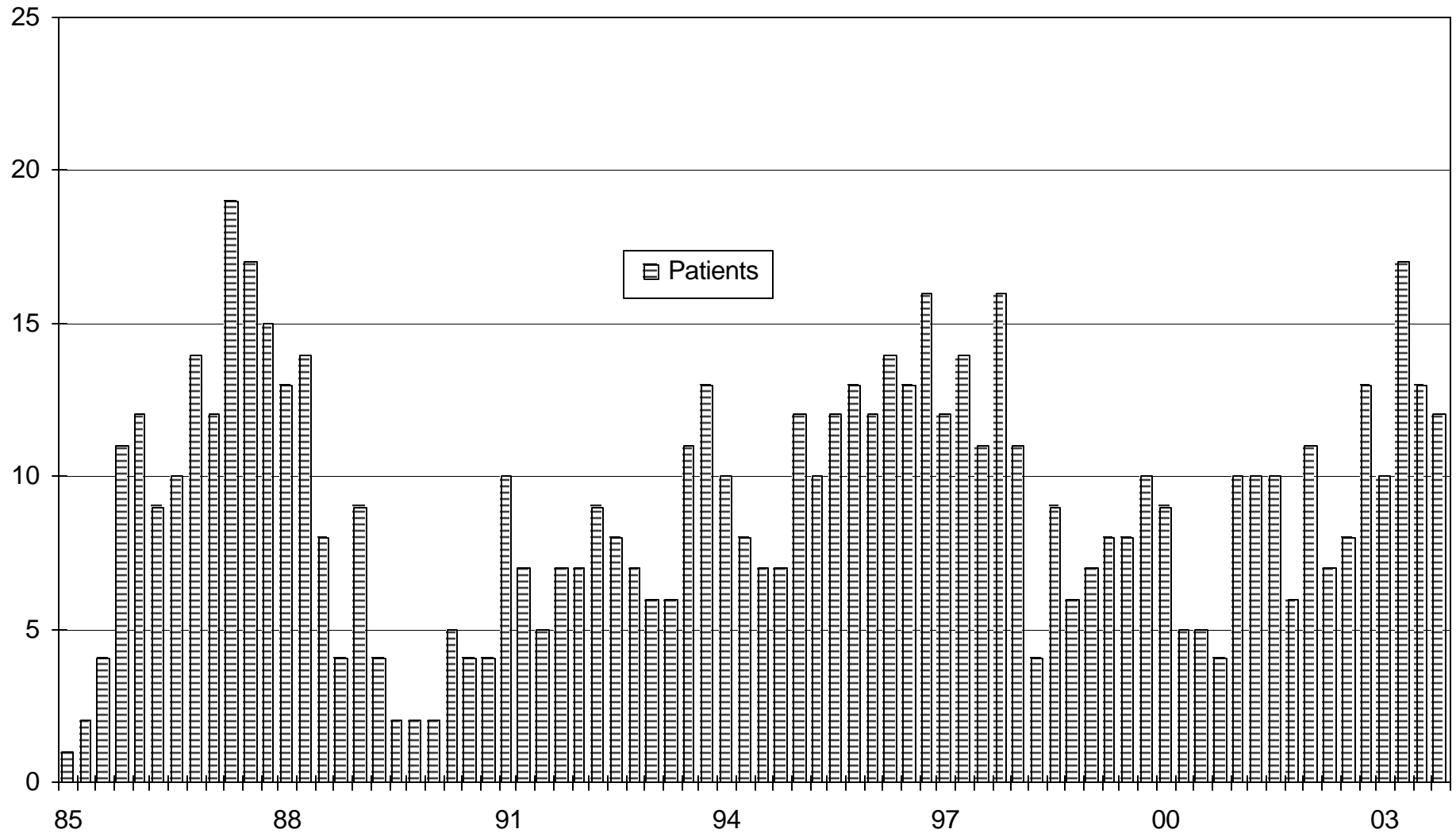
AVERAGE DAILY CENSUS at the Vermont State Hospital January 1985 - December 2003



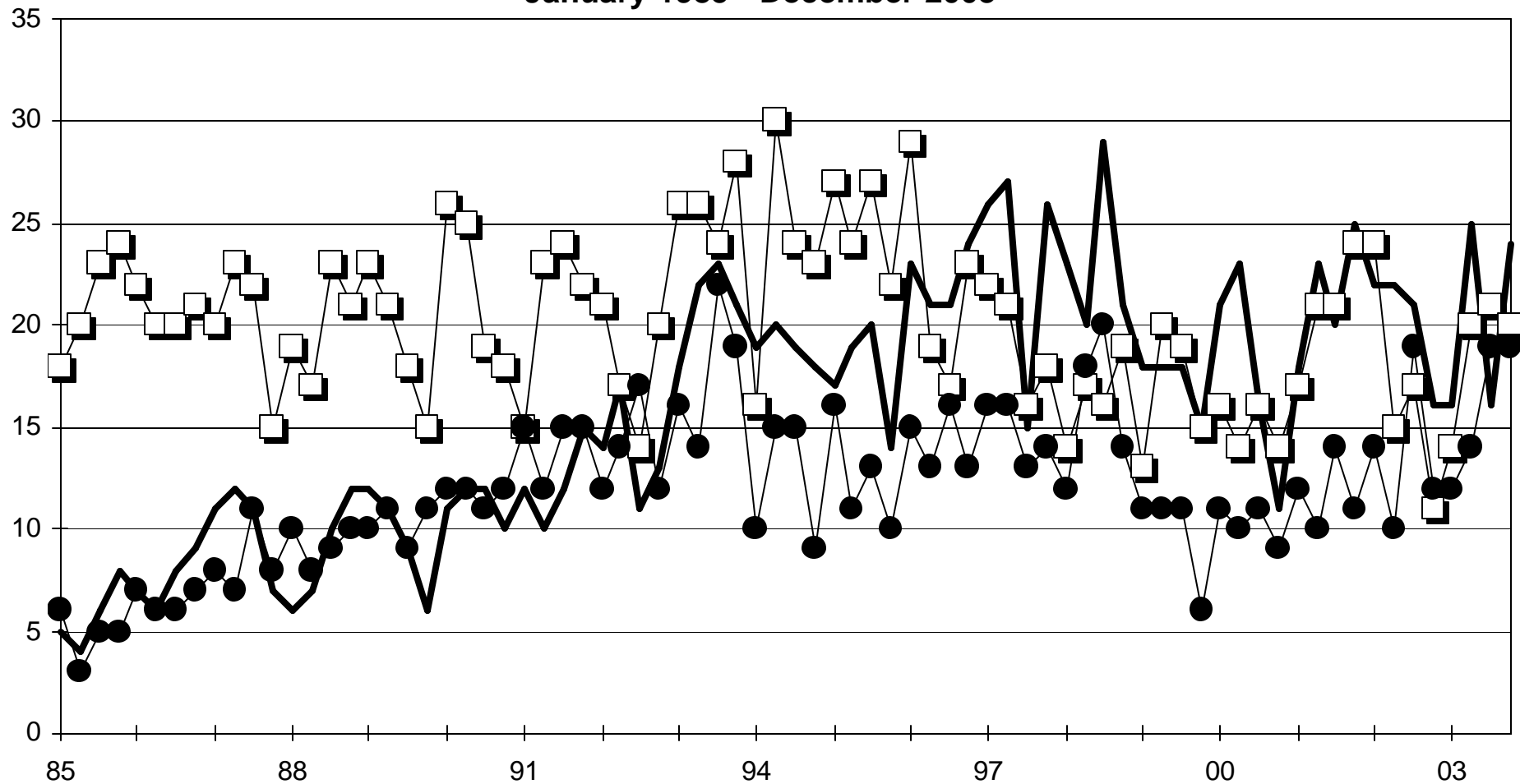
AVERAGE DAILY CENSUS
AT THE VERMONT STATE HOSPITAL
JANUARY 1, 1990 - DECEMBER 31, 2003

<u>Quarter</u>		<u>Total Patients Served</u>	<u>Total Patient Days</u>	<u>Average Daily Census</u>
1990				
I.	Jan - March	198	9,873	109.7
II.	April - June	203	10,332	113.5
III.	July - Sept	188	10,700	116.3
IV.	Oct - Dec	198	10,382	112.8
1991				
I.	Jan - March	197	9,527	105.9
II.	April - June	179	8,757	96.2
III.	July - Sept	187	9,357	101.7
IV.	Oct - Dec	196	9,650	104.9
1992				
I.	Jan - March	189	9,202	101.1
II.	April - June	169	8,990	98.8
III.	July - Sept	151	8,466	92.0
IV.	Oct - Dec	158	8,491	92.3
1993				
I.	Jan - March	152	8,230	91.4
II.	April - June	148	7,524	82.7
III.	July - Sept	160	7,870	85.5
IV.	Oct - Dec	154	8,076	87.8
1994				
I.	Jan - March	146	7,427	82.5
II.	April - June	150	6,433	70.7
III.	July - Sept	156	6,830	74.2
IV.	Oct - Dec	153	7,435	80.8
1995				
I.	Jan - March	140	6,481	72.0
II.	April - June	141	6,836	75.1
III.	July - Sept	153	7,037	76.5
IV.	Oct - Dec	161	7,415	80.6
1996				
I.	Jan - March	150	7,193	79.0
II.	April - June	134	6,200	68.1
III.	July - Sept	129	5,861	63.7
IV.	Oct - Dec	123	5,894	64.1
1997				
I.	Jan - March	121	6,232	69.2
II.	April - June	142	6,845	75.2
III.	July - Sept	158	6,099	66.3
IV.	Oct - Dec	130	5,157	56.1
1998				
I.	Jan - March	126	5,004	55.6
II.	April - June	116	5,218	57.3
III.	July - Sept	101	5,188	56.4
IV.	Oct - Dec	109	4,954	54.4
1999				
I.	Jan - March	105	4,516	50.2
II.	April - June	114	4,842	53.2
III.	July - Sept	114	5,330	57.9
IV.	Oct - Dec	113	5,127	55.7
2000				
I.	Jan - March	95	4,077	44.8
II.	April - June	90	4,149	45.6
III.	July - Sept	106	4,499	48.9
IV.	Oct - Dec	109	5,238	56.9
2001				
I.	Jan - March	103	4,911	54.6
II.	April - June	108	4,580	50.3
III.	July - Sept	124	4,661	50.7
IV.	Oct - Dec	109	4,887	53.1
2002				
I.	Jan - March	104	4,973	55.3
II.	April - June	106	5,074	55.8
III.	July - Sept	107	5,288	57.5
IV.	Oct - Dec	103	4,786	52.0
2003				
I.	Jan - March	99	4,496	50.0
II.	April - June	101	4,594	50.5
III.	July - Sept	111	4,810	52.3
IV.	Oct - Dec	89	4,901	53.3

**NON-EMERGENCY INVOLUNTARY MEDICATION
at the Vermont State Hospital
January 1985 - December 2003**



RATE OF INVOLUNTARY TREATMENT
Percent of Patients
Vermont State Hospital
January 1985 - December 2003



— Total Medication

—□— Seclusion

—●— Restraint

RATES OF INVOLUNTARY TREATMENT
Incidents Per Patient Year
Vermont State Hospital
January 1985 - December 2003

